

# O'Connor Sokolowski Partnership

Consulting Civil & Structural Engineers

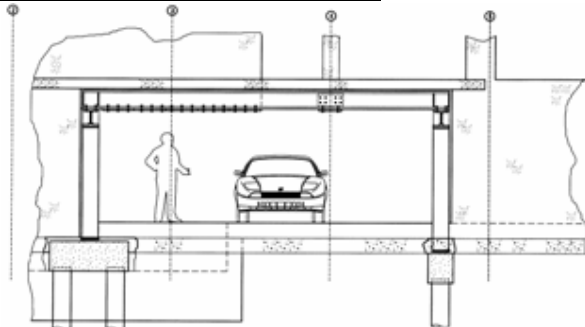
OCSP



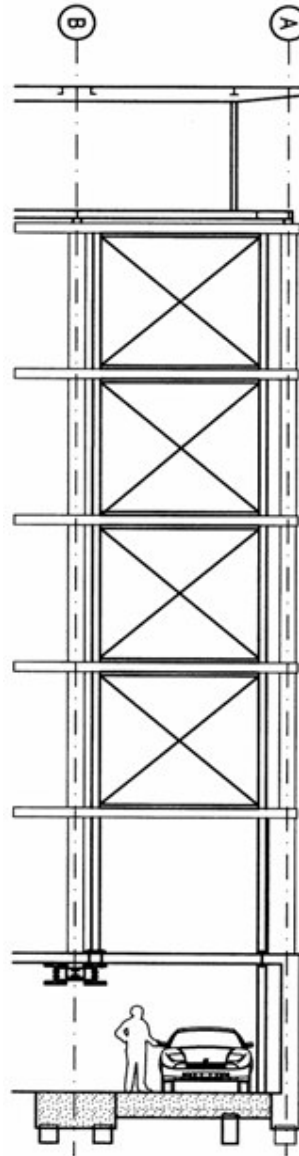
Existing Front Elevation



New Structural Steelwork Cross Bracing



Elevation: New Structural Steelwork Transfer Beams Supporting 6 Floors of Apartments Over and Providing New Basement Car Parking



Elevation: New Cross Bracing Providing Lateral Stability to the Existing Building



Perspective of Completed New Building

LAVENDER HILL, CLAPHAM, LONDON SW11

<b>Client:</b>	<b>Deep Blue Sea Ltd.</b>
<b>Contract Administrator:</b>	<b>Barrie Tankel Partnership</b>
<b>Architect:</b>	<b>Colwynfoulkes &amp; Partners</b>
<b>Building Services Engineer:</b>	<b>Barry Griffin Associates</b>
<b>Structural Engineer:</b>	<b>O'Connor Sokolowski Partnership</b>
<b>Planning Supervisor:</b>	<b>O'Connor Sokolowski Partnership</b>
<b>Contractor:</b>	<b>MP Brothers Ltd.</b>

Major structural alterations and extensions to the existing reinforced concrete framed office building to convert to 24 new luxury apartments, including; removal and infilling of reinforced concrete lift, stairs services cores and shear walls, installation of new structural steel braced frames and transfer beams to restrain the building and create column free car parking spaces in the existing basement. The development also includes the construction of new roof level penthouses and a reinforced concrete lift, stair and services core (with extended basement) to the rear of the building. (Value: £2.5M approx.)

*Architectural images courtesy of Colwynfoulkes & Partners Architects*