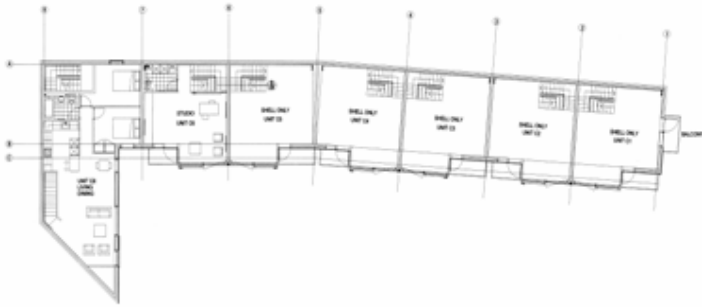


O'Connor Sokolowski Partnership

Consulting Civil & Structural Engineers

OCSP



Ground Floor



First Floor



Second Floor



Front Elevation



View at Ground Floor



Cross Section

HORNSEY, LONDON N8

Client:
Architect:
Structural Engineer:
Quantity Surveyor:

Marine Developments Ltd.
Bushe Associates
O'Connor Sokolowski Partnership
Barrie Tankel Partnership

Eight new live/work terraced houses and apartments on four floors. Structural schemes for the development included traditional masonry with pre-stressed concrete floors and timber frame construction. (Value: £1.2m approx.)

Architectural images courtesy of Bushe Associates Architects