

# O'Connor Sokolowski Partnership

Consulting Civil & Structural Engineers

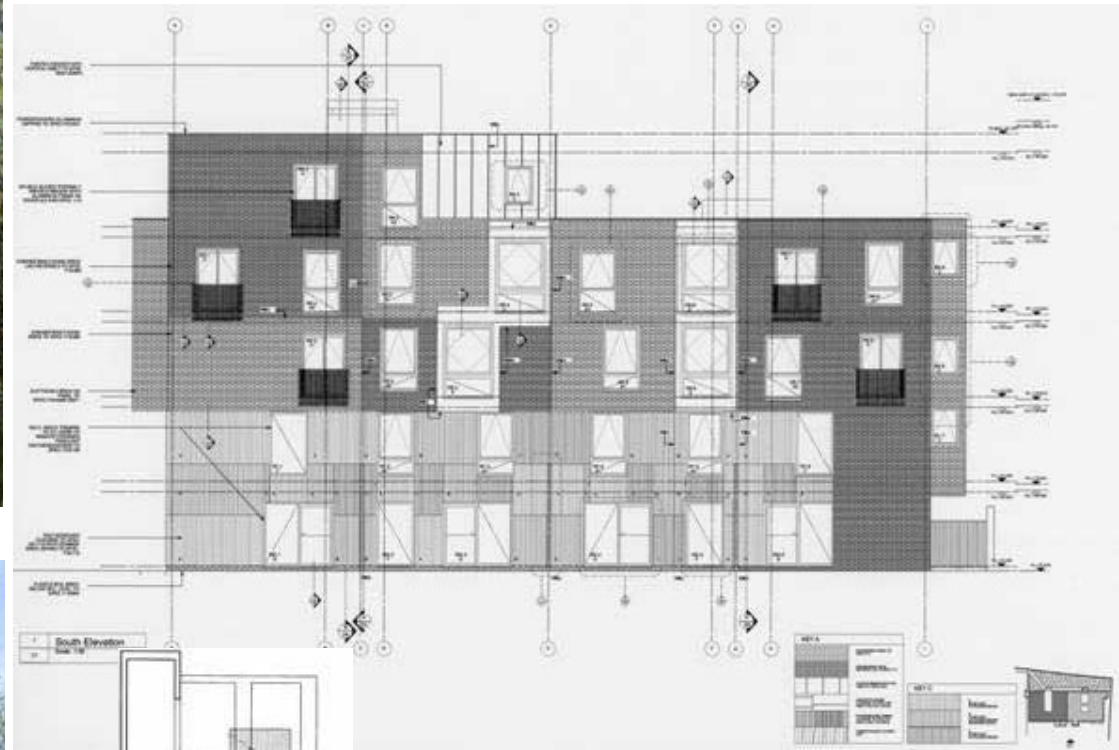
OCSP



Rear Elevation



Side Elevation



Section Through Stair

## GREEN LANES, HACKNEY, LONDON N4

<b>Client:</b>	<i>Auburn Ltd.</i>
<b>Project Manager /Architect:</b>	<i>Cliff Cole Associates</i>
<b>Architect:</b>	<i>Bushe Associates</i>
<b>Structural Engineer:</b>	<i>O'Connor Sokolowski Partnership</i>
<b>Building Services Engineer:</b>	<i>Cundall Johnson Partnership</i>
<b>Quantity Surveyor:</b>	<i>Atkins Faithful &amp; Gould</i>
<b>Planning Supervisor</b>	<i>Atkins Faithful &amp; Gould</i>
<b>Party Wall Surveyors:</b>	<i>Newmarket Surveying</i>

Construction of new 4 & 5 storey, 14 apartment and duplex building comprising reinforced concrete framed structure supported on piled foundations on a highly desiccated clay brownfield site.  
(Value: £1.8 million approx.)

*Architectural images courtesy of Bushe Associates Architects*